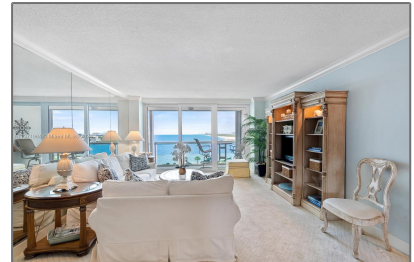


# Residential For Sale

1,109 Sqft - 2100 S Ocean Ln # 610, Fort  
Lauderdale, Florida 33316



## Basic Details

Property Type:	<b>Residential</b>
Listing Type:	<b>For Sale</b>
Listing ID:	<b>A11371964</b>
Price:	<b>\$625,000</b>
Bedroom(s):	<b>1</b>
Bathroom(s):	<b>1</b>
Square Footage:	<b>1,109 Sqft</b>
Year Built:	<b>1969</b>
Half Bathrooms:	<b>1</b>
On Market Date:	<b>19/04/2023</b>

## Features

✓	View:	<b>Ocean View, Direct Ocean</b>
✓	Patio:	<b>Open Balcony</b>
✓	Furnished:	<b>Furnished</b>

## Address Map

Country:	<b>US</b>
State:	<b>FL</b>
County:	<b>Broward County</b>
City:	<b>Fort Lauderdale</b>
Zipcode:	<b>33316</b>
Street:	<b>2100 S Ocean Ln # 610</b>
Building Name:	<b>POINT OF AMERICAS</b>

Longitude:	<b>W81° 53' 35.4"</b>
Latitude:	<b>N26° 5' 47.5"</b>

Agent **Info**

---



Elena Beck  
 (305) 924-6985

-

---